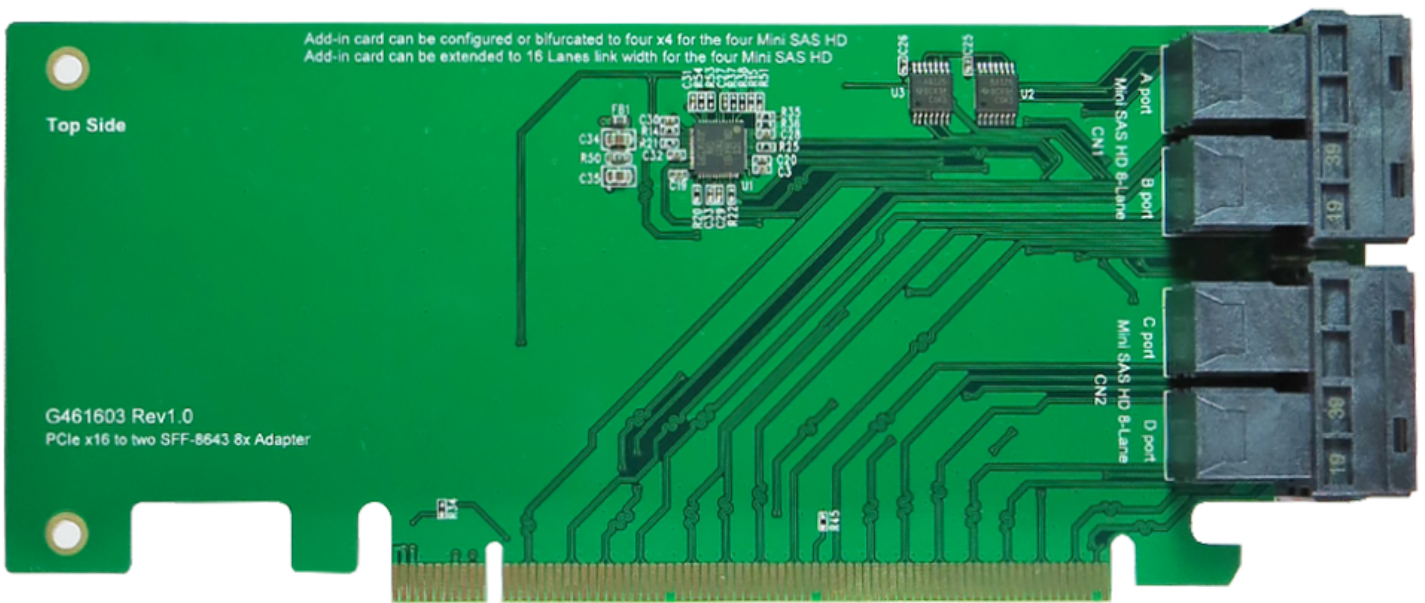


# Innocard Minerva

## PE1602

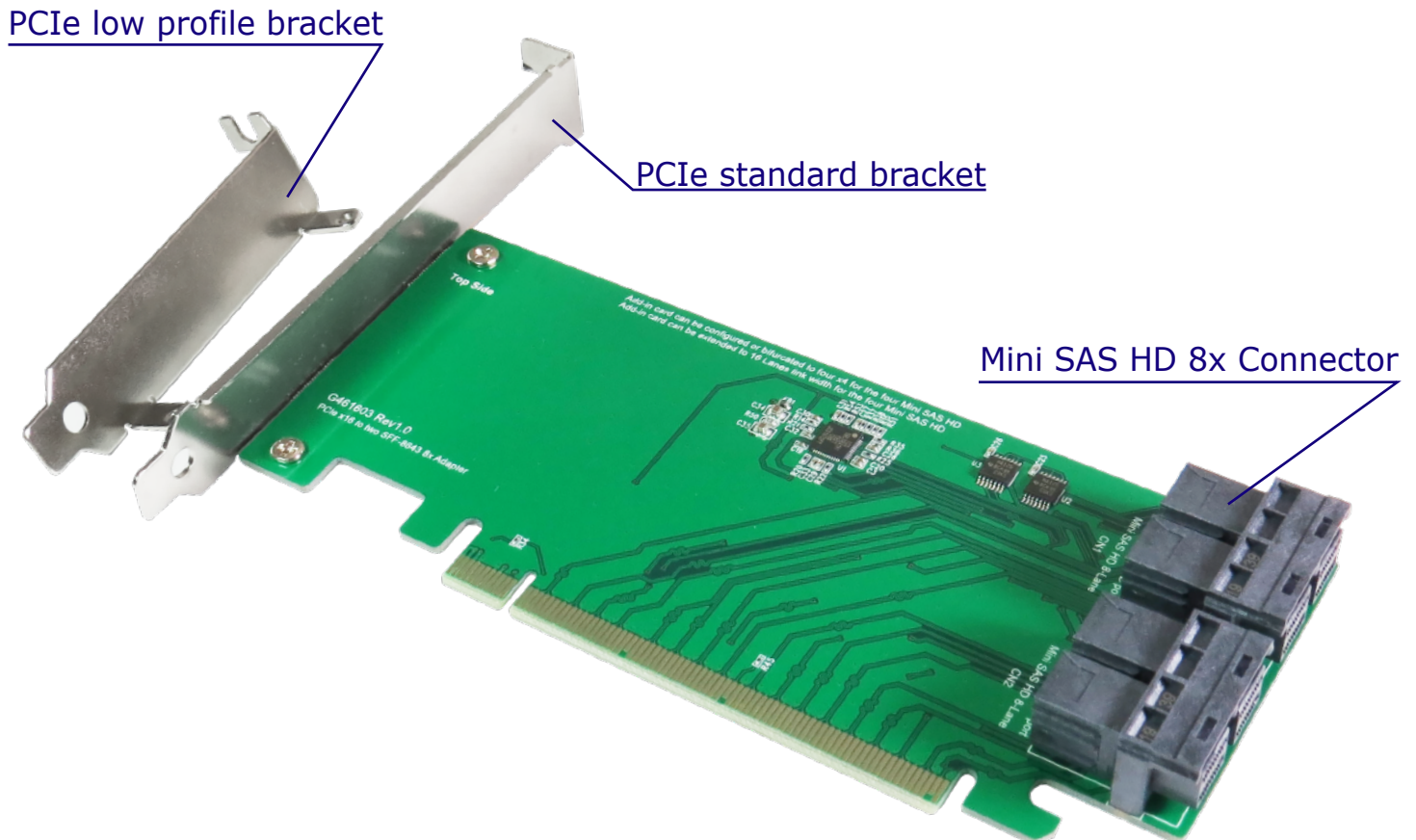
PCIe Gen3 16-lane to Mini SAS HD(SFF-8643) quad-port Adapter



### Notice:

The Mainboard with CPU and BIOS needs to support bifurcation to ensure PCIe x16 link width to bifurcate two x8 link width for NVMe SSD. If not, PE1602 Riser Card only supports PCIe x16 link width

## PCIe Gen3 16-lane to Mini SAS HD(SFF-8643) quad-port Adapter



### Features

- ※ PE1602 can be bifurcated in quad x4(need CPU and BIOS both support) and x4 data link width configurations
- ※ PE1602 features four internal NVMe(SFF-8643) for high-performance storage connectivity.
- ※ Build in Mini SAS HD(SFF-8643) 8x connector 2 sets, pin-out defined by SFF-9402
- ※ Four internal lanes per Mini SAS HD port, 3.2Gb/s per port
- ※ Supports four physical NVMe devices
- ※ Supports SFF-9402 clock pin out
- ※ Supports Intel define Mini SAS HD(SFF-8643) clock pin out
- ※ Supports SFF-9402 perst# pin out
- ※ Supports Intel Define Mini SAS HD(SFF-8643) perst# pin out
- ※ Enables the system clock signal to be used over longer trace lengths and over a cable
- ※ Enables the system perst# signal to be used over longer trace lengths and over a cable

## PCIe Gen3 16-lane to Mini SAS HD(SFF-8643) quad-port Adapter

### Specifications

- ※ Compliant with NVM Express 1.2a
- ※ Support PCI Express Base Specification Rev 3.1
- ※ Support SSD\_Form\_Factor\_Version1\_a
- ※ Compliant with SFF-8643 Specification Version 3.5

### Operating system support

- ※ Vmware
- ※ Linux
- ※ Windows 8 &8.1
- ※ Windows 10
- ※ UEFI 2.3.1 or later

### Application

- ※ Servers
- ※ HBA(Host Bus Adapter)
- ※ Data Center
- ※ Storage Racks
- ※ Storage Controller
- ※ Servers RAIDs(Redundant Array of Independent Disks)
- ※ Routers
- ※ Switchs

## Block Diagram

